


AIN'T TOO PROUD TO BEG

$\text{♩} = 110$

A  **BRASS**

DRUM FILL

2

2

2

2

5

B **CHORUS**


2

2

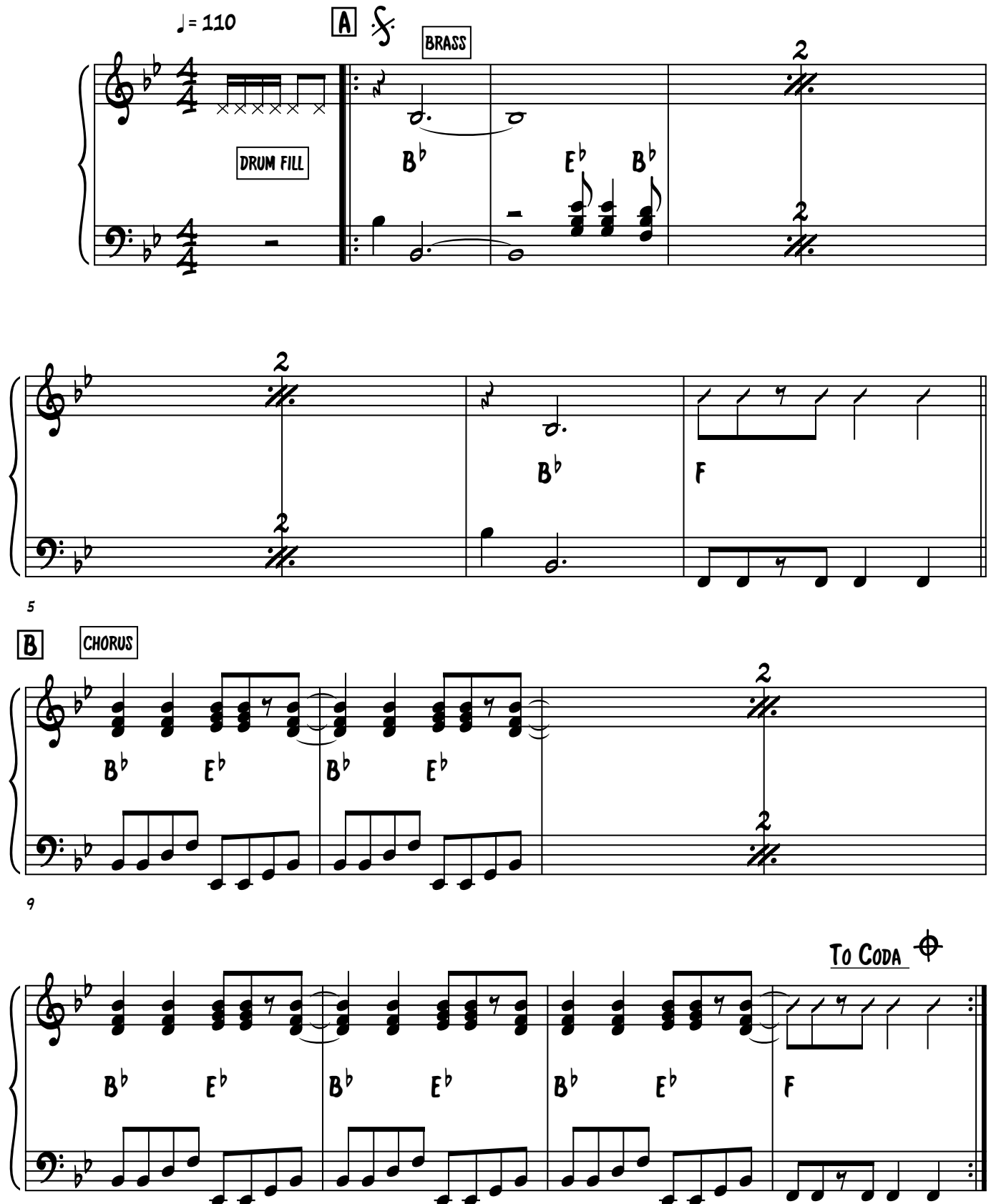
2

2

9

To CODA 

13

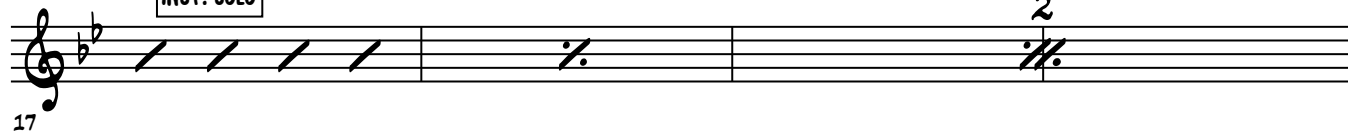


AIN'T TOO PROUD TO BEG

2
C

B^b E^b

INST. SOLO

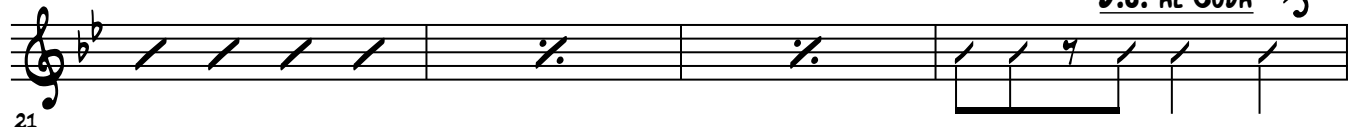


17

B^b E^b

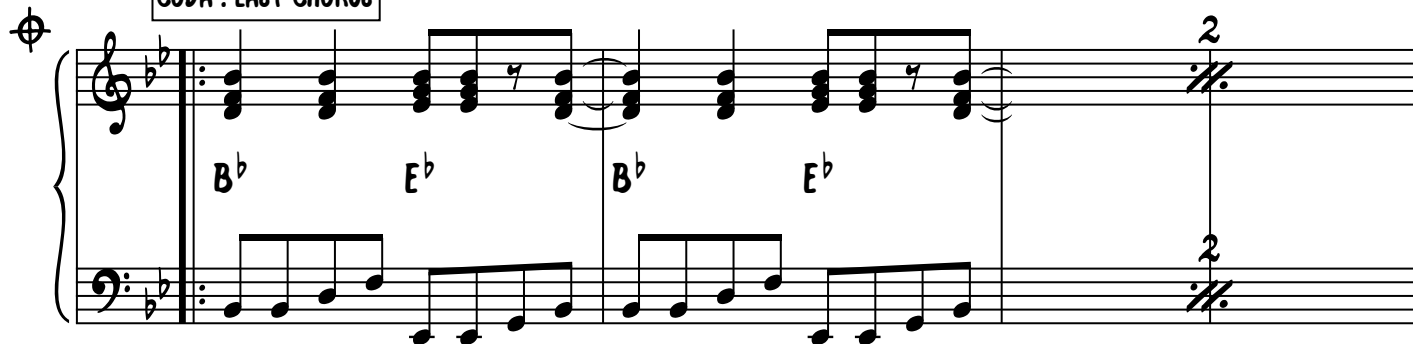
F

D.S. AL CODA

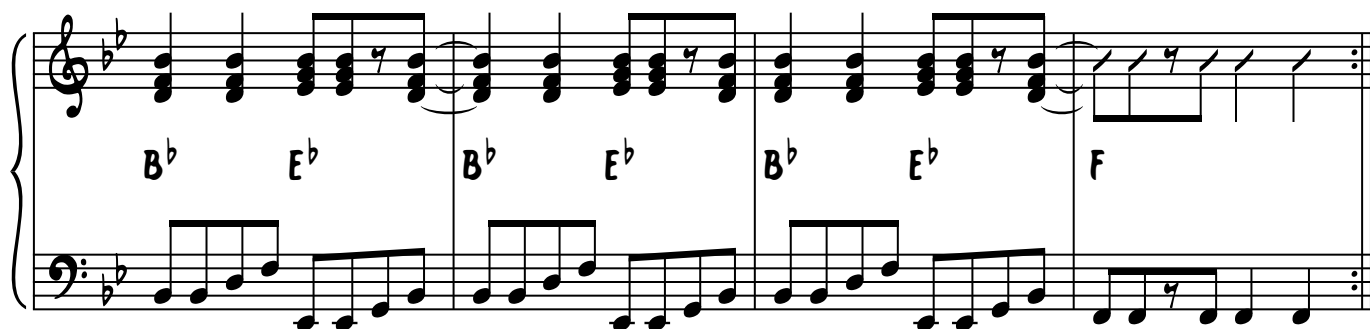


21

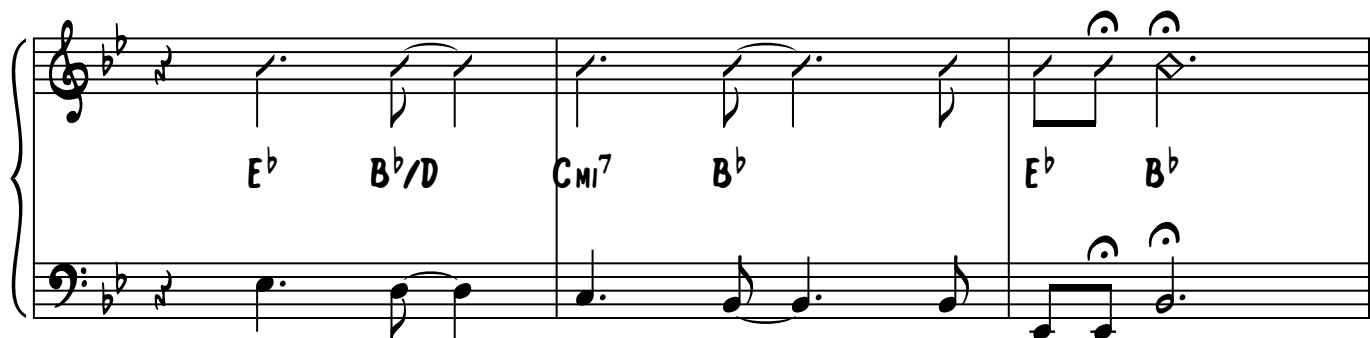
CODA : LAST CHORUS



25



29



33